

klopotek.

**Journal Editorial
Management
(JEM)**

Version 8.7

Status: October 2008

Copyright 2008 by
Klopotek & Partner GmbH
Schlueterstrasse 39
10629 Berlin
Germany

This document is copyright protected and contains confidential information from Klopotek & Partner GmbH.

Any whole or partial use that is not allowed by contractual agreement requires prior written permission from Klopotek & Partner GmbH. This applies in particular to the reproduction, duplication, editing, translating and digitizing of copyrighted or confidential material.

Every precaution has been taken to ensure that the information concerning hardware and software explained in this document is accurate and correct. However, errors and/or omissions cannot be entirely excluded. Liability is therefore not assumed for incorrect information. The right to make technical changes is always reserved.

JOURNAL EDITORIAL MANAGEMENT**Table of Contents**

Contribution Management	1
Issue Planning	2
Royalty Statement Contribution Authors	5
Publication Pool Planning and Production (Extension from Publication Pool Distribution)	6
Codes/Reader Service	11
Index	12
Catalog feature incl. WEB-060 / 6.0 XML Export Publication Pool	13
Enhanced User Management and Password Security (incl. LDAP)	14
Interface Editor	15
Customer-Specific Plausibility Checks	16

JOURNAL EDITORIAL MANAGEMENT

Contribution Management

Contribution - BIO2

BIO/1, Year 2001, Issue 4 (In process) The Trade Publisher

BIO2 Standard Report Incomplete Data Journal

A plant's-eye view of the world

Comments ESM Royalty Texts Schedule Offprints Product

Contribution Classification Links Contributors Issues Production Format

Title A plant's-eye view of the world

Subtitle

Contrib. Type Report Work. Title Royalty Due

Origin Follow. Contrib. from Proj.

Prod. Mgr. Mark. Activity

Cost Unit Manuscript No. Manuscript

Complete Extent

Illustrations B/W 2/C 4/C

Halftones

Line Art

Half-tone Line

Tables

Other Illustr.

Number of Pages / Illustrations

Planned / Printed

Text Pages

Illustr. Pages

Illustrations

Special Pagination

DOI - Version 1 DOI DOI-Status No registration

Notes

Contrib. Info

- Contribution management, production
- Contribution title, subtitle, multi-language abstracts, column title
- Title input and output in directory is optional with other fonts
- Illustrations, illustration numbers, texts for content and first page
- Automatic pagination, taking special pagination into account
- Electronic media
- Contribution quick record, list editing, automatic and manual keyword generation
- Automatic DOI issue (Digital Object Identifier)
- Classification, thesaurus, keywords and catchwords

JOURNAL EDITORIAL MANAGEMENT

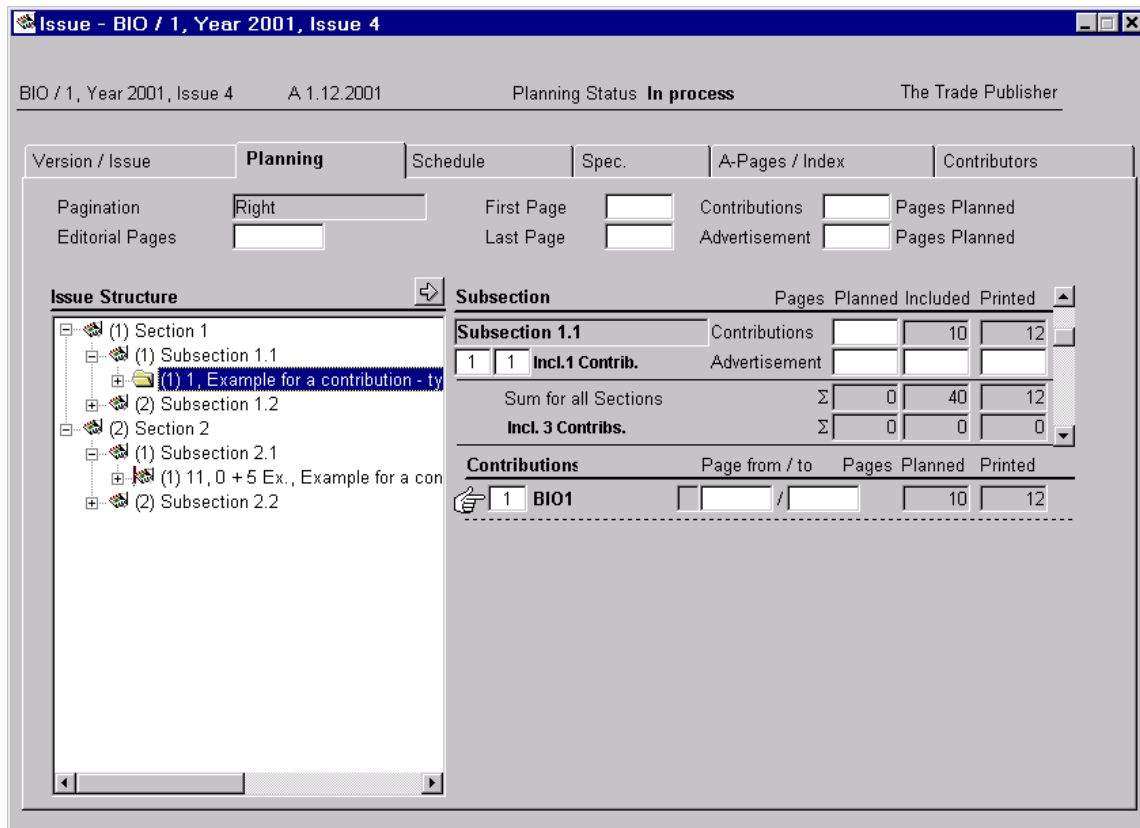
Issue Planning

Issue - BIO / 1, Year 2001, Issue 4					
BIO / 1, Year 2001, Issue 4		A 1.12.2001		Planning Status In process	
The Trade Publisher					
Version / Issue	Planning	Schedule	Spec.	A-Pages / Index	Contributors
Version					
Title	Children's Biology			Area of Responsibility	VA1
Intern.Short Title				Production Cost Center	
ISSN	6789-0945	Publisher	Children	Version Type	Standard version
First Release	4.5.1987	Primary Lang.	English	Product Type	Paper
		Production Site	Berlin	Single Iss.Order	<input checked="" type="checkbox"/>
Issue					
Subject				Cost Unit	
Inserts				Single Iss.Order	<input type="checkbox"/>
Implementation		Language	English	Editions	2000 Regular
Distribution	1.12.2001	Production Site	Berlin		350 Marketing
Delivery	28.11.2001				400 Other
Initiate Distribution		Production Partner			2750 Total
Production	24.11.2001				
Comments					
Notes on Print Job					

Issue planning and production data

- Bibliographical publication data
- Specification data with publication specification data display, such as binding process, format or standard layout
- A-page assignment: A-pages, position in text, advertisement size
- Assignment of the contributor from the address pool
- Transferring contributor from publication
- The staff member designator for transfer to contributions
- Direct link to the publication data, the editing of assigned contributions and the editing of assigned contributor addresses

Issue Planning



Planning

- Planning specifications on the page count for the issue, the section and contribution differentiated by advertisements and contributions
- The arrangement of sections, subsections and contributions
- Special section planning per issue
- Presentation of the issue according to the printed structure
 - Issue
 - Sections
 - Subsections
 - Contributions in the sequence determined by the user
 - Contributor
- Automatic pagination, alternatively with contribution start on the right or right/left
- Consecutive pagination of all issues in a volume
- Special pagination
- Calculation of the first and last page of each contribution and the issue

Issue Planning

Ser. No.	Task	Dur. Days	Depending on Ser.No	Start			End			Fix. Dept.	Appr. Person	Not. OK
				Earliest	Latest	Actual	Earliest	Latest	Actual			
1	Material sent to fu	1		8.9.2004	1.12.2001		8.9.2004	1.12.2001				
2	Illustration originals	1		8.9.2004	1.12.2001		8.9.2004	1.12.2001				
3	Deadline for Advertiser	1		8.9.2004	29.11.2001		8.9.2004	29.11.2001				
4	Issue data	4		8.9.2004	23.11.2001		11.9.2004	26.11.2001				
5	Final editorial	5	4	12.9.2004	27.11.2001		16.9.2004	1.12.2001				
6	Ads to printing	2	3	9.9.2004	30.11.2001		10.9.2004	1.12.2001				

Project Start: 8.9.2004, 23.11.2001 Project End: 16.9.2004, 1.12.2001

Calculate Immed. Show Full Schedule

Buttons: Calculate, Template, Close, Help

Schedule

- Planned publication and distribution date
- Scheduling from manuscript receipt up to issue distribution
- Production status, critical dates, testing criteria
- Pre-defined schedule templates, custom schedules, mandatory schedules
- Using the schedule template fixed for the publication
- Calling up schedules per responsible contributor

JOURNAL EDITORIAL SYSTEM

Royalty Statement Contribution Authors

The screenshot shows a software window titled "Contribution - BIO3". The main content area displays the following information:

- Contribution: BIO/1, Year 2001, Issue 4 (In process)
- Publisher: The Trade Publisher
- Journal: BIO3
- Classification: Editorial
- Links: Incomplete Data
- Format: Journal
- Contribution Title: Medicine in 1800

The "Royalty" tab is active, showing the following fields and options:

- Contributor: John Daglish, W1 V 1PH London, Carnaby Street 6
- Contr. Type: Author
- Settled from / to: /
- First Release:
- Hold:
- Offsetting: Royalty
- Currency: GBP
- Private Bank Account:
- Split: %
- Consolidate Settle.:
- Flat Rate:
- Page / Line: 50,00 No. 10 Pages
- Run on: No. Offset

- Contribution royalty per line, per page or flat rate
- Calculation of run ons
- Consolidate payments for several contributions of an issue
- Royalty split across several beneficiaries
- Payments and claims
- Royalties for issue and for contribution
- Royalty statement for authors or companies
- Royalty control list, credit transfer log

- Prerequisite: License for Contribution Management

JOURNAL EDITORIAL SYSTEM

Publication Pool Planning and Production (Extension from Publication Pool Distribution)

Publication - BIO / 1 Children's Biology - ISSN 6789-0945

Active Company Group The Trade Publisher

Links	Classification	Type Area	Order Handling	Content	Comments	Cit. Index
Combination	Supplement	Sections	Schedule	ASM Sections	Production	Contributors
General Terms						
Bibliography	VAT	Special Terms	Prices	Shipment	ASM Comb.	
Version Type	Standard versi	Product Type	Paper	2. Product Type		
Published	Regularly	Description	Perforated, stitche	2. Description		
Status	Active	Hold				
Ship. Domestic	Printed paper rate	Early Cancellation	<input type="checkbox"/>	Distribution Hold	<input checked="" type="checkbox"/>	Single Iss. Order <input checked="" type="checkbox"/>
Mail Sort No.		Cancell. Deadline		Codes	<input checked="" type="checkbox"/>	Gratis <input type="checkbox"/>
Ship. International	Air Mail	Within Duration		In Stock	<input type="checkbox"/>	Sample/Invoice <input checked="" type="checkbox"/>
Year 2000 - 0 V/4 I		Hold		Year 2003, Issue 3		
Issue 1 - 7.8.2000S		Name		Issue	3	Weight 0,53 oz
Issue 2 - 7.8.2000S		Year Type		Reference No.		
Issue 3 - 2.3.2000S		Frequency		Times Cover Date		
Issue 4 - 1.12.2000P		Implementation		Planned Pages/Units Editions		
Year 2001 - 0 V/3 I		Distribution	1.8.2003	Pages		Regular
Issue 1 - 1.1.2001P		Planned Pub. Date	1.8.2003	Units		Marketing
Issue 2 - 1.4.2001P		Delivery	1.8.2003	First/Last Page		Other
Issue 3 - 1.8.2001P		Initiate Distribution	1.8.2003	Total		
Issue 4 - 1.12.2001S		Production		Materials Close		
Year 2002 - 0 V/3 I		Published Online				
Issue 1 - 1.1.2002S		No Invoice	<input type="checkbox"/>	Physical	<input checked="" type="checkbox"/>	Incl. Supplement <input type="checkbox"/>
Issue 2 - 1.4.2002S		Releas. for Invoicing	<input type="checkbox"/>	Available	<input checked="" type="checkbox"/>	Single Iss. Order <input type="checkbox"/>
Issue 3 - 1.8.2002S		POD Suitable	<input type="checkbox"/>	Reasons, POD Not Suitable		Specimen Cpy <input type="checkbox"/>
Issue 4 - 1.12.2002S		POD Active	<input type="checkbox"/>	Diverse		Comb. Iss. <input type="checkbox"/>
Year 2003 - 0 V/4 I		Cost Unit		Price List Validity	1.8.2003	
Issue 1 - 1.1.2003S		Order as		Deadline for Adv.		
Issue 2 - 1.4.2003S		Special Name		Deadline for Ins.		
Issue 3 - 1.8.2003S		Number		Deadl. for B.I.		
Issue 4 - 1.12.2003P		ISBN				
		Title				

- Basis system for editorial planning, journal distribution and advertisement management
- Title, version, year
- Supplement assignment between issues and publications
- Combined issues and volumes, carry over years
- Cost unit numbers for year, volume and issue
- Copy and duplication function for journal years
- Taking on external titles for competition analysis
- Journal issue POD-suitable
- Publication data with sources
- Modification history: display of the logged changes to the publication pool

Publication Pool Planning and Production (Extension from Publication Pool Distribution)

Publication - BIO / 1 Children's Biology - ISSN 6789-0945

Active Company Group The Trade Publisher

Links Classification Type Area Order Handling Content Comments Cit. Index

Combination Supplement Sections Schedule ASM Sections Production Contributors

General Terms **Bibliography** VAT Special Terms Prices Shipment ASM Comb.

Publication BIO Valid from 7.8.2000 to

Title Children's Biology

Subtitle

Gen.Short Title Children's Biology

Int.Short Title

Version Descript.

Keywords CHILDRENS BIOLOGY

ISSN 6789-0945 Publisher Children

First Release 4.5.1987 Production Site Berlin

Primary Lang. English Other Languages German

WWW Address www.trade.childrenbiology.com

Interface Info

Cost Unit Area of Responsibility VA1 DOI Version 1

Reference No. Production Cost Center

Discontinued

Publication Merged into Discont.as of Sold Incl.Subscr. Incl.Stock

Version Discont.as of Sold Incl.Subscr. Incl.Stock

Order

Combined Publ. Comb.Version Comb.Adv. Comb.Group

Bibliography

- Bibliographical information (publisher, title, subtitle, international short title and ISSN)
- Title modifications with log
- Regular and irregular version publication
- Planning managers cost centers and production cost centers
- Integrated www connection

Sections

- Sections and subsections
- Cost sharing with author at publication and section level

Publication Pool Planning and Production (Extension from Publication Pool Distribution)

Publication - BIO / 1 Children's Biology - ISSN 6789-0945

Active Company Group The Trade Publisher

General Terms	Bibliography	VAT	Special Terms	Prices	Shipment	ASM Comb.
Links	Classification	Type Area	Order Handling	Content	Comments	Cit. Index
Combination	Supplement	Sections	Schedule	ASM Sections	Production	Contributors

Print Procedure: Procedure 1 (dropdown) Format: Format A4 (dropdown)

Binding: Sewn binding (dropdown) Standard Layout: (dropdown)

Typesetting Diffic.: Simple (dropdown) Style of First Cover Page: (dropdown)

Pagination: Right (dropdown) Production Cost Level: 4 (input)

ScreenRulingContTonePics: 50 (input)

Standard Schedule

For Issues: Standard (dropdown) For Contributions: Standard (dropdown)

Paper Quality Page Type

Good (dropdown) Cover (dropdown)

Simple (dropdown) Content (dropdown)

Format Type Format

Format of return (dropdown) RTF Structured (dropdown)

Supplier: Gilbert Publishing, WC2E 8JZ London, Albany Street 7

Production

- Production data
- Specification of standard schedule templates for issues and contributions
- Paper qualities
- Technical formats

Publication Pool Planning and Production (Extension from Publication Pool Distribution)

Publication - BIO / 1 Children's Biology - ISSN 6789-0945

Active Company Group The Trade Publisher

General Terms	Bibliography	VAT	Special Terms	Prices	Shipment	ASM Comb.
Links	Classification	Type Area	Order Handling	Content	Comments	Cit. Index
Combination	Supplement	Sections	Schedule	ASM Sections	Production	Contributors

Responsible

Prod.Mgr. Planner

Other Contributors Filter

Bell and Walter Ltd., Peter - Sebastian Bell; Christchurch, Moorhouse Ave. 219

Name

Contr.Type Additional

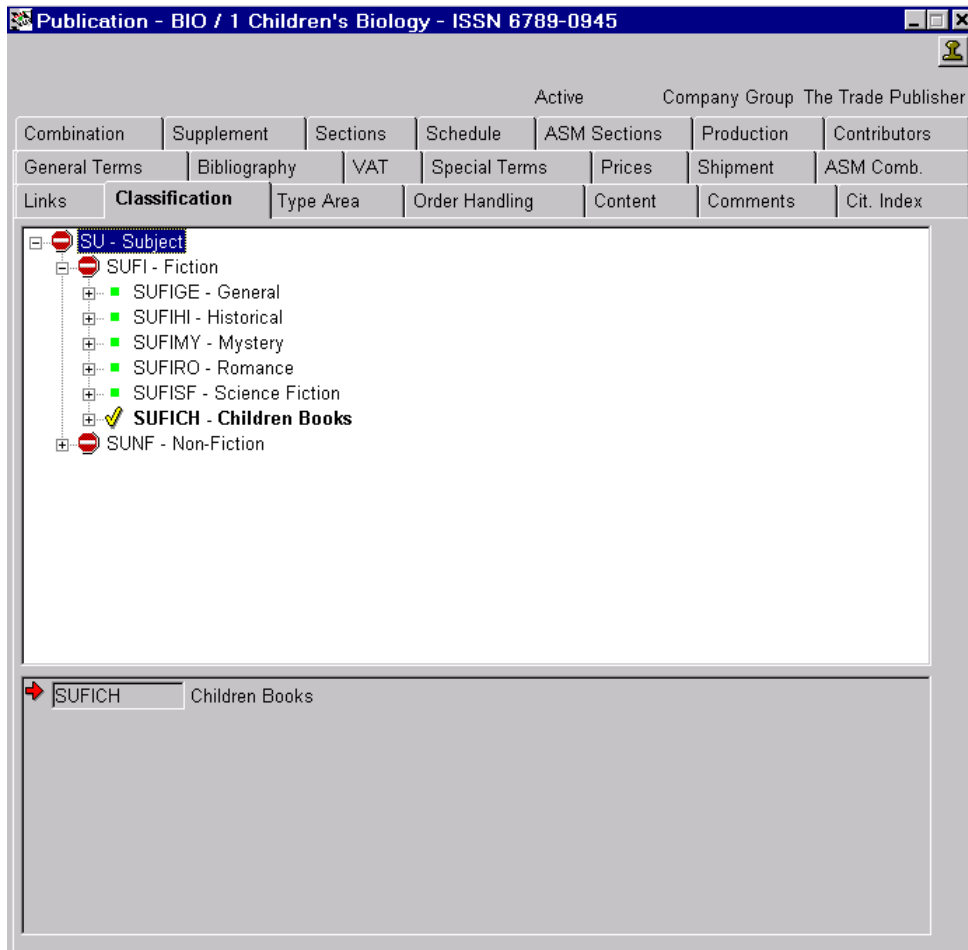
Valid from to Get for Issue Get for Contribution

Note

Contributors

- Manual assignment of contributors or via link with address pool
- Setting the responsible production manager or planning manager
- Automatic acceptance of contributors for issues and contributions

Publication Pool Planning and Production (Extension from Publication Pool Distribution)



Classification

- Definition and assignment of freely definable, multi-level classifications

Integrated word processing

- Customized letters and forms
- Manuscript cover note
- Authors correspondence
- Customized reports
- Title allocations list
- Specifications for production

JOURNAL EDITORIAL SYSTEM**JEM****ADVERTISEMENT SALES AND MANAGEMENT SYSTEM****ASM****Codes/Reader Service**

BPNo.	Customer	Delivery Address	Ad./Contribution No.	Quant.	Page	Keyword	Code
ADV		Bookseller No.1, 10585 Berlin, Richard-Wagner-Str. 123	692			ADV, Product Displ. ,1x2 Pages (136-170g/m²)	
		Bookseller No.1, 10585 Berlin, Richard-Wagner-Str. 123					

- Assignment of codes at publication level to contributions and advertisements
- Advertisement codes
 - For coded advertisements the specification of codes is on a per insertion order basis for an advertisement
 - For an advertisement insertion order there is only one reader service customer
 - There can be any number of codes for an advertisement insertion order
- Contribution codes
 - There can be several reader service customers for a contribution
 - Each reader service customer of a contribution can be assigned a code number
- Recording responses to coded journals, manually or through an interface
- Sending responses via an OLE interface to the reader service customers (ASM only)

JOURNAL EDITORIAL SYSTEM

Index

Contents

Publication/Version: BIO 1 from Year: 2001 to Volume: Issue: 3

Table Type: Contents

Page Number Separator: Page Only Issue/Page Volume/Issue/Page Year/Vol./Iss./Page

WinWord Template File: File: inhalt.rtf Directory: I:\cc-zr\kup\zrv6.7\programs\letter

WinWord Output File: File: inhalt.rtf Directory: I:\cc-zr\kup\zrv6.7\programs\letter

Launch Word processing

Year 2001, Issue 3
Company report
BI04 / A plant's-eye view of the world
Editorial
BI06 / A plant's-eye view of the world

OK Cancel Help

Creating lists and indexes

- Annual content list
- Annual author list
- Annual company list
- Keyword index

JOURNAL EDITORIAL SYSTEM

Catalog feature incl. WEB-060 / 6.0 XML Export Publication Pool

The screenshot shows a web application window titled "Journal - Selection Profile - [295] - ASB". The status is "Planned" and the company group is "The Academic Publis". The "Catalog" tab is active, showing the "XML Export" section with "Now" selected and a "Start Export" button. Below, the "Output Parameters XML-Source" section includes fields for "Group by", "MDT Language", "Eff. Date", "Texts" (set to "NONE"), "Text Filter", "Ext. Objects" (set to "NONE"), "Reference Year" (set to "2005"), and "No. Years from/to" (set to "0 / 0"). Checkboxes for "Version", "Export Keywords", "Year", "Responsible", "Volume", "Schedule", and "Issue" are visible, with "Version" checked.

Export of the publication pool data in XML format

- The selection of the publication pool data can be limited to:
 - Journals
 - Classifications
 - Schedules
 - Publication units
- Display of the selection results
 - Adding publications that are to be exported along with the selected publications.
 - Deleting publications that are not to be exported.

Enhanced User Management and Password Security (incl. LDAP)

- Synchronization of the user data of an LDAP implementing directory service – for the Klopotek user schema (KAS schema)
 - Management of all user data and passwords centrally in an LDAP implementing directory service¹ – e.g. Microsoft® Active Directory® (AD)
 - Responsibilities for the database², for Klopotek access protection (rights in the Klopotek applications) and for central authentication (user and password) can be separated from one another.
 - Upon synchronization to the Klopotek user schema, the user name, assignment to one or more user groups and user-specific properties are synchronized.
- Use of user profiles (templates) for LDAP synchronization to assign the same user-specific properties per user group (e.g. proprietor and company group)²
- Special user properties for the Product Planning and Management system (PPM) are automatically generated in the actual target databases²
 - Users are generated as special staff members
 - Users are assigned to a department
 - Users have special responsibilities defined for them
 - The owner³ of the user settings is assigned
- Enhanced password security for the user schema (KAS schema), if an LDAP implementing directory service is not used
 - Password has limited validity and user is sent a warning prior to expiration of validity
 - Structure of the password entered is checked against sample passwords
 - Number of times incorrect passwords can be entered can be limited and the period of time until hold is lifted defined
 - List of the most recently used passwords forces users to enter new passwords

¹ Currently only released for the LDAP implementing directory service Microsoft® Active Directory® (AD). The Klopotek software generally supports other LDAP implementing directory services. For questions and information about technical review, please get in touch with Klopotek & Partner GmbH.

² This functionality is part of version 8.7 and higher.

³ This functionality is part of version 8.8 and higher.

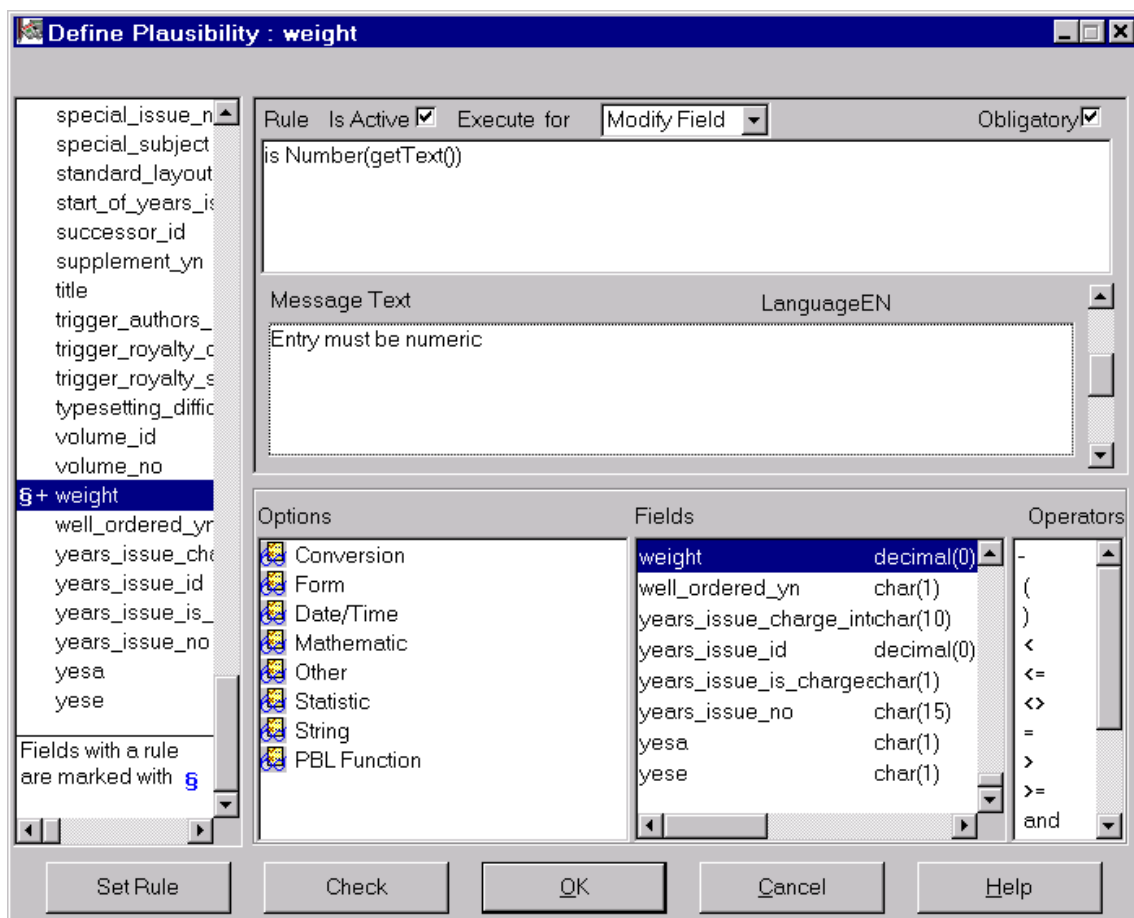
Interface Editor

- The **Interface Editor** is one of the Klopotek tools that makes it easy to process the data in interface tables. The **Interface Editor** works directly at database level.

The **Interface Editor**:

- can be *freely configured* with respect to the interface tables and columns you want to work with can be used to define interface tables and columns without having to open a different program
- can be *customized* using freely definable procedures (Oracle Stored Procedures) that provide user-defined functionality – at any time and without having to open a different program
- is *independent* of the version of Klopotek & Partner software you are using
- adheres to the security concept (Klopotek Authentication Server)
- can handle various generally available data formats for the *export* of the interface data
- provides a *print engine* that can be freely configured
- can only be operated via license keys for each interface table/function for *security reasons*
- *logs* all changes to interfaces

Customer-Specific Plausibility Checks



- Integration of customer-specific plausibility checks
 - Ensuring data consistency through customer-specific rules
 - Flexibility when operating with external systems
- Check when exiting a field or before saving in the database
- Applicable to all objects in the Klopotek software

- Prerequisite for the implementation: Version 8 of the Power Builder™ developer environment, to create global functions for individual complex rules

Contacts:

Benelux and Scandinavia

Klopotek BV
Oostenburgervoorstraat 120 -124
1018 MR Amsterdam
Netherlands
Tel: +31.20.5210.070
Fax: +31.20.5210.098
www.klopotek.nl
www.klopotek.be

Contact:
Ernst Lopes Cardozo
e.lopescardozo@klopotek.nl

Germany

Klopotek & Partner GmbH
Schlueterstrasse 39
10629 Berlin
Germany
Tel: +49.30.884 53.0
Fax: +49.30.884 53.222
www.klopotek.de

Contact:
Stefan Jacob
s.jacob@klopotek.de

UK

Klopotek UK Ltd
90 Long Acre, Covent Garden
London WC2E 9RZ
United Kingdom
Tel.: +44.20.7716 5500
Fax: +44.20.7716 5595
www.klopotek.co.uk

Contact:
Sabine Schubert
s.schubert@klopotek.com

USA and Canada

Klopotek North America, Inc.
2001 Route 46, Suite 203
Parsippany, NJ 07054
USA
Tel. +1.800.239.9254x101 (toll-free USA/Canada)
Tel. +1.973.331.1010
Fax : +1. 973.331.0042
www.klopotek.com

Contact:
John Wicker
j.wicker@klopotek.com

Global Turnkey Systems, Inc.
Klopotek North America, Inc.
2001 Route 46, Suite 203
Parsippany, NJ 07054
USA

Tel. +1.973.331.1010
Fax : +1. 973.331.0042
www.gtsystems.com

Contact:
Al Alteslane
a.alteslane@gtsystems.com

Sales Europe

Carl Mann
carl.mann@klopotek.com